

Alaska Department of Fish and Game

Habitat Section
Southeast Region



114-33-10230 Tributary 11

ADDITION

Water body name:

Survey date: 9/13/2022

Quad: Juneau A-6

Species & Lifestage:

Upper Reach Latitude: 58.105714 **Longitude:** -135.864425

Survey crew: DK, FC

Lower Reach Latitude: 58.106131 **Longitude:** -135.860164

Findings: We surveyed this uncataloged stream using a backpack electrofisher and GPS and captured juvenile coho salmon (Figure 1). The tributary stream falls over a rootwad/debris jam and flows through a gravel channel, passing through a 4 ft wide culvert (Table 1; Figures 2–4).

Recommendations: Add this uncataloged stream to the anadromous waters catalog for rearing coho salmon (Figure 5).

Nomination: Pending

Table 1.—114-33-10230 tributary 11 survey data.

Waypoint	Latitude	Longitude	Notes	Stream Width ft	Stream Substrate	Habitat Features	Gradient %	Sample Effort	Sample Results
1795	58.105776	-135.864096	Inlet of 4' wide CMP. No sediment in pipe. Gradient slightly increases upstream of culvert.	4-6	Small Gravel Large Gravel		4-6	Not Fished	
1796	58.105713	-135.864548	12-18" falls over rootwad.					Not Fished	
1807	58.105868	-135.863874	4' CMP, perched about 2" with a small 4" jump pool. Culvert is at 2-3% gradient but appears passable at high flows.	8-10	Small Gravel	Spawning Substrate	1-2	EF	3 CO
1808	58.105718	-135.864445	Stream is over-widened upstream with significant sediment accumulation above culvert. No fish caught above a 18" tall debris jam; CO caught directly below it.					EF	2 CO



Figure 1.—Juvenile coho salmon captured at waypoint 1807.



Figure 2.—Culvert inlet at waypoint 1795.



Figure 3.—Channel at waypoint 1795.



Figure 4.—Rootwad/debris jam at waypoint 1796.

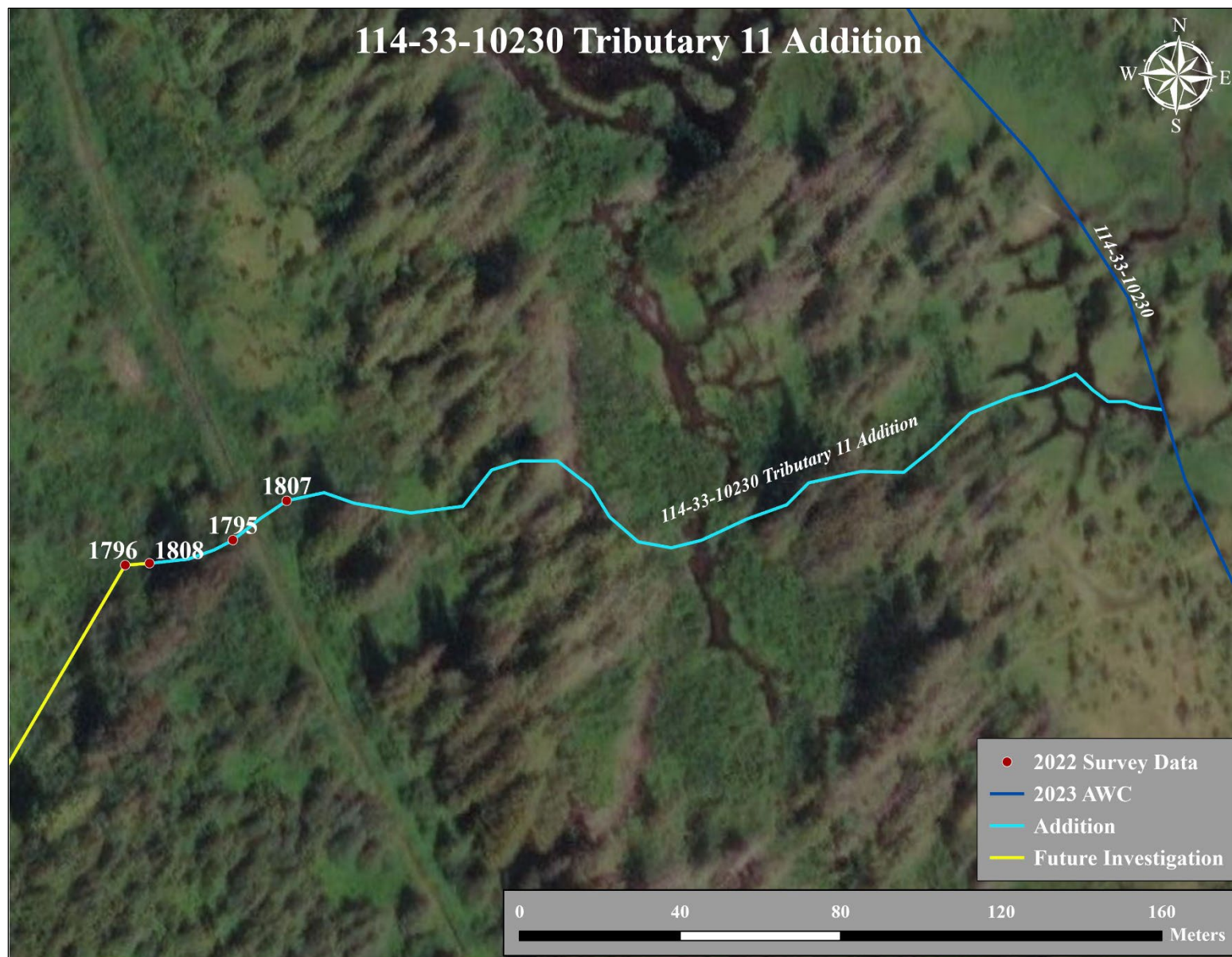


Figure 5.—114-33-10230 tributary 11 addition map.